

INSTALLATION INSTRUCTIONS FOR QUICK-STEP WATER-RESISTANT WOOD FLOORING

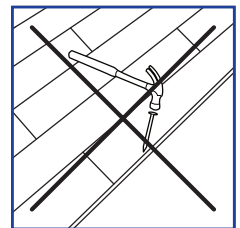
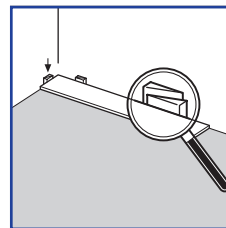
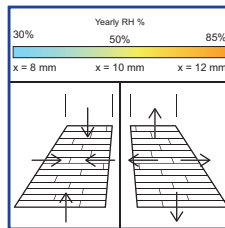
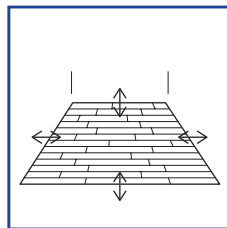
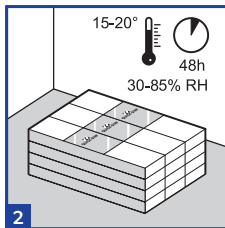
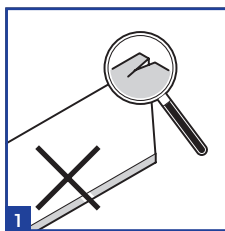
In order to obtain a good result, we advise all parties to follow all given instructions carefully. Please make sure that the floor user has a copy of this document. National regulations regarding the floor application must always be followed.

Quick-Step Wood Flooring materials are delivered with instructions in the form of illustrations. The text below is covering a floating or glue down installation, and is divided in 4 areas: Preparation, Installation, Finishing and Maintenance. We recommend that you read through this information carefully while studying each illustration. In case of doubts or questions please contact your Quick-Step dealer/Technical Services. The use of the original Quick-Step accessories is strongly recommended to benefit from the full product warranty.

BEFORE STARTING

A wood flooring is to be considered as an interior product, and should be taken care of like such prior to, during and after installation.

The installation should be done after eventual painting and other wet works are done and dried out. If other works are ongoing after installation, an appropriate covering should be placed on top of the Quick Step Wood Flooring. Do NOT tape covering material direct to the surface since the tape glue might harm the lacquered or oiled surface.



1. PREPARATION

1

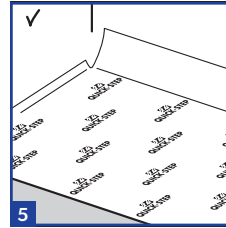
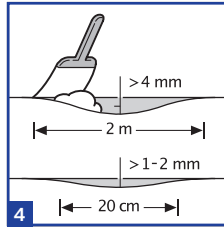
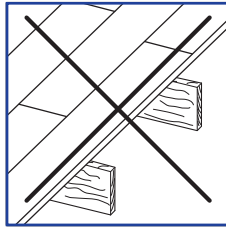
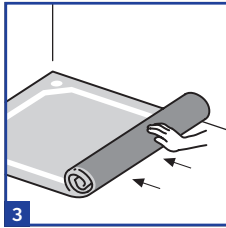
Quick-Step Wood Floors can be bought in different formats, decors and gradings. Make sure you have received the wood flooring that you have ordered before starting the installation. It is always a good idea to keep one end-label together with your receipt. Also write down the productioncode mentioned at the back of a plank. Do not install planks with damaged surfaces, edges or locking systems. Check every plank carefully before and during the installation, preferably in daylight. Bear in mind that wood is not a homogeneous material. Wood is a natural product, which means that no wooden flooring plank will be identical to another just like no tree is identical to another one. The occurrence, amount and size of sap wood, knots and cracks depends on the selected grading and chosen range. These are natural features of wood and cannot be considered as a product fault. Therefore you should always check if you have the right impression of the floor before installation and that you have all the information. If a wood flooring plank has been installed it is considered as accepted and defects or color variation cannot form any ground of complaint. We recommend that the planks are mixed from several packs during installation.

2

After receiving the packs, these should be acclimatized. This has to be done unopened and stored in a flat position free from the wall and base floor prior to installation. Store the unopened packs at a normal room temperature (15-20°C / 59 - 65 °F) and a relative humidity(RH) level between 30-85% for a minimum of 48 hours prior to installation. A Quick-Step Wood Floor is made of natural wood and will expand and contract upon changes in the relative humidity. The dimensional variation of an installed floor will be slightly more in width compared to the length. At 20°C and a relative humidity(RH) between 40-60%, the dimensional change is very limited. Quick-Step Wood Floors are produced and delivered with a moisture content to cope with an RH between 30-85%.

Floating

In certain climates, for example in the Nordics during winter time, the RH might drop below 30% and in summertime rise above 85%. This will create a movement of your wood flooring. To secure enough clearance for this natural movement and to avoid open joints, squeaking, etc. always keep the expansion gap to the walls, thresholds, staircases, pipes, etc. Use the spacers of the installation kit to keep the correct clearance. If installing in regions with an average high RH level the clearance should be raised. (high RH = floor expands). The clearance should be left open and must not be filled by any sealant, silicone or other adhesive. A floating installation must remain a floating. So never fix the flooring with nails, glue, screws or heavy build-in objects like kitchens in any other way.



3

Quick-Step Wood Flooring must be installed on a solid, self-supporting wooden or cement based subfloor. Any other type of floor coverings must be removed first. No signs of mould and/or insect infestation should be present. Make sure the subfloor is level and nail/screw down any loose parts. In case of textile or other vapor-permeable floor coverings it is necessary to remove both the floor covering and its base. Existing floors made from a vapor-tight covering do not need to be removed (PVC, linoleum, etc.) if they meet all other requirements. The crawl space under the wooden base must be ventilated. Remove any obstacles and make sure there is sufficient ventilation (min. 4 cm² of ventilation opening/ m² of floor). Be aware of the fact that any wood and/or organic material might/will dry out locally and damage your wood flooring if any heating source like hot fans, wood stoves etc. is creating high temperatures. The moisture content of the wood cannot exceed 10%. An installation directly on floor joists is prohibited.

Floating

For a floating installation it is always necessary to use an underlay. In case of a wooden subfloor install the new Quick-Step Wood Flooring perpendicular to the existing wooden planks or planks.

Glued

Existing floorcovering must be removed completely before gluing down your Quick-Step Wood Floor. The subfloor must be firm, hard, dry even and must conform to the standard. Make sure that the subfloor is dry, flat, stable, clean and free from grease and chemical substances. If needed, scrape off and clean up old adhesives. Prior to installation, carefully remove all debris (including nails), sweep and vacuum. Repair major surface imperfections and large cracks. It is recommended to remove old skirtings and to install new ones after the installation of the floor.

4

The entire subfloor must be carefully checked for any type of unevenness. Use a straight edge of 2 m, make sure there are no unevenness's of more than 4 mm for floating installation and 3mm for glue down installation. Small peaks higher than 1 à 2 mm within a 200 mm radius are also prohibited and need to be scraped away. If needed use a levelling compound to achieve correct flatness of the subfloor.

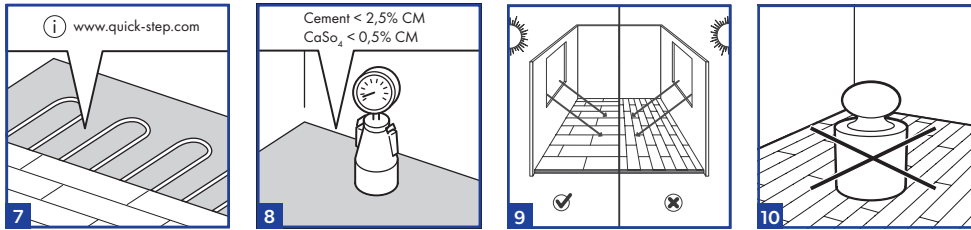
5

Floating

In case of a FLOATING installation we strongly recommend using a Quick-Step underlay to achieve optimal sound reduction, best walking comfort, avoid squeaking and to level minor unevenness. A floating installation on cement screed, concrete or in case of floor heating, requires the use of a damp screen. All Quick-Step underlays have a build-in vapor barrier. In case you use another underlay, which does not have a vapor barrier, the installation of a 0,2 mm PE-film is required as a minimum damp screen. Make sure the PE-film overlaps with a minimum of 200 mm. A floating installation with any other type of underlay that is not a Quick-Step underlay must meet the same technical specifications. In case of problems caused by a non-compatible underlay, warranty will be void.

Glued

In case of a GLUED installation, an underlay can not be used. When installing the glued wood flooring on the ground floor, we recommend to first applying a liquid damp proof membrane. This liquid DPM is a 2 or 3 component epoxy coating which makes sure there is a moisture barrier. The Quick-Step Wood Floor can then be bonded onto this DPM with a flexible adhesive such as MS or PU.



7

Additional instructions apply if there is underfloor heating or cooling. For health and safety reasons and to avoid problems with the Quick-Step Wood Floor, certain important basic rules need to be followed:

Floor Heating

- Firstly it is very important to ensure a floor surface temperature of maximum 27°C (80°F)
- In case of a floating installation, a suitable underlay must be chosen. The total Thermal Resistance (R) of your Quick-Step Wood floor in combination with the underlay must be not higher than 0,15 m²K/W
- Always change the temperature gradually at the start and end of a heating period
- Finally try to avoid heat accumulation by carpets or rugs or by leaving insufficient space between furniture and the floor.
- Water based and electrical floor heating systems are permitted

Floor Cooling

- For floor cooling, a heat-resistance of < 0.09m²K/W is prescribed. The heat-resistance of Quick-Step Wood Floor 14mm is about 0.140 m²K/W. So account should be taken here of a certain loss of capacity.
- Ensure a proper safety system including automatic sensors that detect when the dew point (= start of condensation) is reached below or in the wood floor and then switch off the cooling.

Visit www.quick-step.com for more detailed information about Floor Heating and Floor Cooling.

8

Mineral subfloors such as concrete must be sufficiently dry prior to installation. Installation on cement subfloor requires a CM < 2,5 (75 % RH). An installation on anhydrite subfloor requires a CM < 0,5 % (50% RH). If the moisture content is higher or may become higher other types of damp proofing must be used. If floor heating is used, cement subfloor requires a CM < 1,5 (60% RH) and anhydrite subfloor requires a CM < 0,3 (40% RH). (see Floor Heating Instructions) Always measure, record and keep your moisture content results. A new cement screed floor must dry at least 1 week per 1cm (3/8") thickness up to 4cm (1-1/2"). Thicknesses over 4cm (1-1/2") require twice as much drying time. For example, a 6cm (2-1/2") concrete subfloor must dry at least 8 weeks.

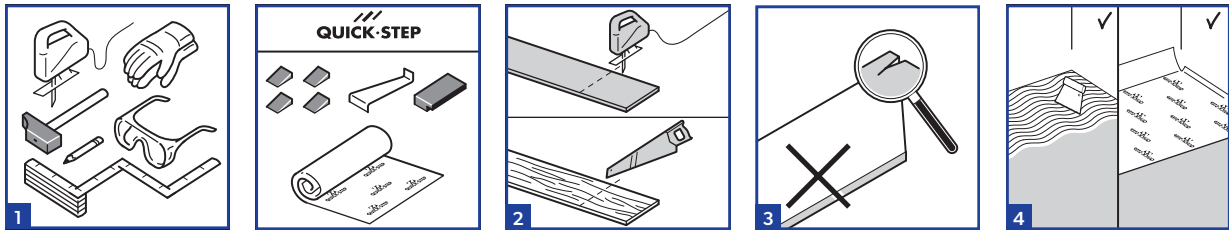
9

Plan the installation direction of the planks carefully before start up. Normally we recommend installation parallel to the incoming light (= perpendicular to windows) . If the room is long and narrow like in a hallway we would install parallel to the long walls. Be aware of the fact natural color will be affected by sun light (discoloration by UV light is inevitable). This might lead to natural fading and color changes which are not a product fault.

10

In case of a FLOATING Installation, cooking islands for kitchens and other very heavy objects should NOT be installed on top of your floor. The floating wood floor must be able to move around the heavy objects to avoid open joints and separating planks. Possible methods to ensure this are the following:

1. First install the heavy objects followed by the installation of your Quick-Step Wood Floor around the heavy object. Do not place the heavy objects on top of the wood flooring.
2. First install your Quick-Step Wood Floor before installing the heavy objects. As a next step, mark on your Quick-Step Wood Floor where the heavy objects will be installed. Finally saw the spots out where the legs of your furniture will be or saw a complete expansion gap on the perimeter of your heavy furniture.



2. INSTALLATION

1

Quick-Step Wood Floors are easy to install and require no expensive tools. In addition to a few common DIY tools (folding rule, pencil, hammer, handsaw or jigsaw, carpenters square and possible power drill and hand gloves) you only need the Quick-Step installation kit containing a tapping block, pull bar and spacers. Be sure you have all tools available before starting the installation. In case of a glued installation, additionally, a glue trowel (recommended is type B11) is needed together with a suitable wood flooring adhesive.

2

When cutting the Quick-Step wood plank be sure you are not creating splinters or chipping when cutting. If using a handsaw keep the decorative surface faced up. If using a jigsaw keep decorative surface down (except for a jigsaw with down-stroke blades).

3

Every Quick-Step wood plank is methodically checked for any imperfections before being packed. Still, packs can be damaged during transportation or when the packs are opened. Do not install a plank with a damaged surface, edge or click joint. Carefully inspect each plank before installing. A Quick-Step box can contain one plank that consists out of multiple, shorter begin/end pieces to ease your installation. The amount of shorter begin/end pieces per box can vary between two and three. Cumulative length of all shorter pieces will always be equal to the length of one standard plank. Be aware of the fact wood is not a homogeneous material. There will be differences from plank to plank as there are differences from tree to tree. These aspects provide you with the warm and natural look and feel a wood floor has to offer. Knots and cracks will also appear depending on the grading and the chosen range. This is natural and will not be considered as a product fault. Therefore always be sure you have got the right impression of the floor and information from the dealer before installation. An installed plank is considered as accepted and cannot be claimed. We recommend to mix the planks, taking planks out of different boxes at the same time when installing.

4

Quick-Step Wood Flooring planks can be installed floating or glued down. We will explain both ways of installation.

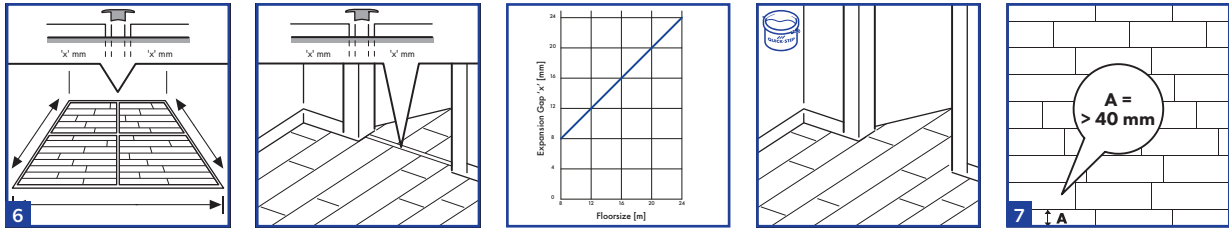
5

Floating

If you choose to install a floating floor you must lay the first section of underlay parallel to the length of the planks to be installed. Gradually add the next sections of underlay as you lay the wood planks. It is vital that you use a levelling underlay to smooth away any unevenness in the floor base. In most cases a vapor-tight foil should be used to protect the floor against rising damp or condensation.

Glued

Direct gluing can only be performed on a subfloor that is suitable for it (in terms of flatness, firmness, cracks, etc.) in conformity with general principles and standards. The subfloor must be sufficiently dry, hard and homogeneous. Make sure to use a suitable glue. Follow the instructions regarding drying time, consumption, application, etc. These instructions need to be provided by the glue manufacturer. If you are gluing down your floor try to walk on it as little as possible on the glued section during installation.



6

Floating

In a floating installation it is important not to exceed the maximum room dimensions. With room dimensions of more than 20mx20m an intermediate expansion gap should be fitted. An expansion gap must be used in typical doorways and room angles. Expansion and contraction are linear so the greater the surface the larger the expansion gap needs to be. As a general rule you can calculate the expansion gap as 1mm/m floor width. The following graph needs to be consulted in order to use the correct expansion gaps 'x'.

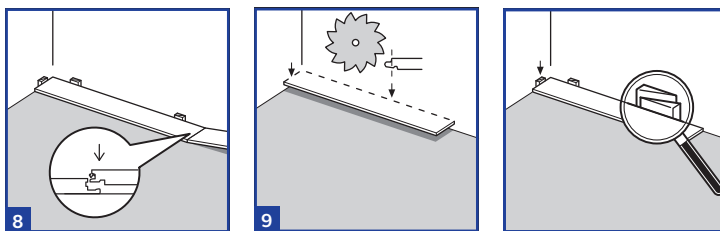
Be aware of the fact that for large room dimensions, the normal skirtings are not covering the expansion gap anymore. To cover the expansion gap, another type of skirting or a combination of several skirting types should be used. A combination of a standard skirting and a quarter round is often used in these situations.

Glued

In a glued installation you have no length and width restrictions. An expansion gap of 8 mm around the perimeter of the room is still obligated but a T moulding in the doorways is not necessary anymore. Constructional expansion gaps of the building and floor heating joints in screed should be transferred on the floor with a flexible joint or a profile.

7

Before starting carefully measure the length and the width of the room to pan a precise lay-out and achieve a balanced appearance of the floor. This will ensure also you won't end up with the last row being too narrow. If the last row would be less than 40 mm the installation will be easier if you cut down the planks of the first row in the width.

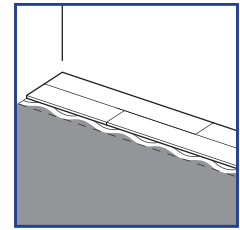
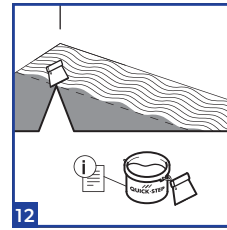
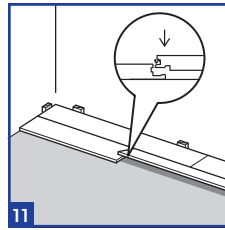
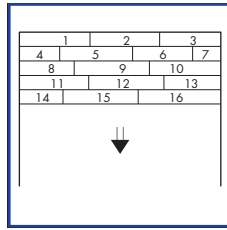
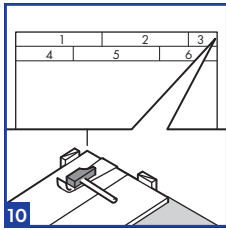


8

Often the installation is done parallel to the long walls of the room. The most common direction of installation of all types of wood floors is from left to right with the tongue side facing the starting wall. Always remember the spacers to ensure your expansion gap ! Thanks to the Multifit patented click system the installation is very easy both for floating and glued installation. This patent makes it very simple to dismantle a plank if needed without destroying the connection mechanism. The end joint can be assembled in different ways by folding down, angling, sliding or tapping in horizontally. The quickest, easiest and most secure way is by folding down. A rubber hammer can be a handy tool to double check the joints and gently tap them if needed.

9

Narrow down the width on the first row or as a minimum cut off the tongue to achieve the first distance to the wall. If the wall is curved/ uneven the first row has to be cut and coped to the contour of the wall. Use minimum 2 spacers per plank length! The short plank will then have the plastic tongue in the end to the right.



10

Install the first 2 rows in accordance to the illustration. We recommend the overlap/staggering between end joints to be about 1/3 of the plank length but never less than 300 mm. Installing the first 2 rows like shown will help keep a straight line to start the rest of the installation. The cut-off from the first and second row should normally be perfect as starting planks in the 3 and 4 row. Always remember using the spacers to keep the correct distance to the walls.

11

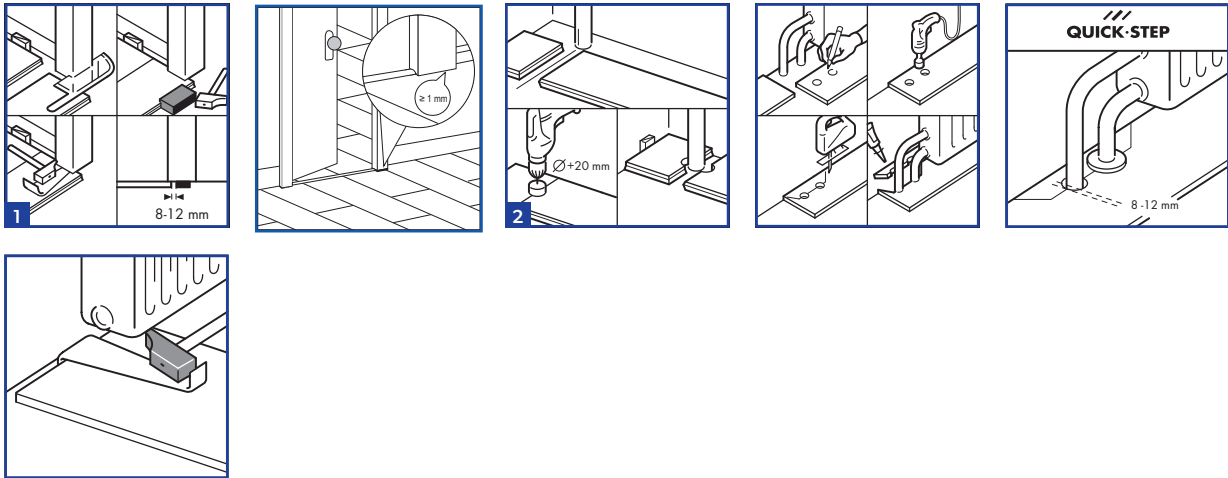
Lift the connecting plank up in an angle of about 20-30 degrees, push it into the long side groove and slide it gently towards the left until the plank ends meet. Push the plank firmly downwards to the floor and the Mulitfit system will lock the joint perfectly in the end. Always check every joint before continuing (gently tap with rubber hammer and tapping block if needed).

12

Glued

Before applying the glue to the subfloor, we recommend to install first at least 2 rows without glue and without connecting the short side joints. In this way you can align your wood flooring perfectly and do the necessary sawing works. In order to keep the installation area clean, we advice to spread the glue each time for 2 rows. Spread the glue for these rows, followed by placing the wood planks. After finishing the first 2 rows, you can sit onto these rows to spread the glue for the next two rows. Follow this working method for the rest of the installation onwards.

Pro Tip: If you face any tricky corners during your installation, it is recommended to prepare them first without glue to be sure that they



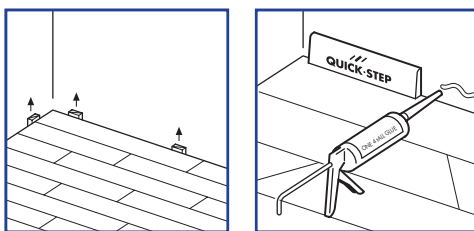
3. FINISHING

1

For a nice finish where the wood flooring meets a doorframe we recommend undercutting the frame of the door. To secure the correct cut off turn a plank upside down and place it on the floor up to the frame. Then place the hand saw flat against the plank and simply cut through the frame/moulding as shown. Remove the cut out piece and vacuum away dust. Then you can simply slide the floor plank underneath the frame/moulding and make a perfect finish. If the doorframe is installed after the floor installation, please make sure that a min. 1 mm vertical gap is left between the base of the doorframe and the surface of the floor.

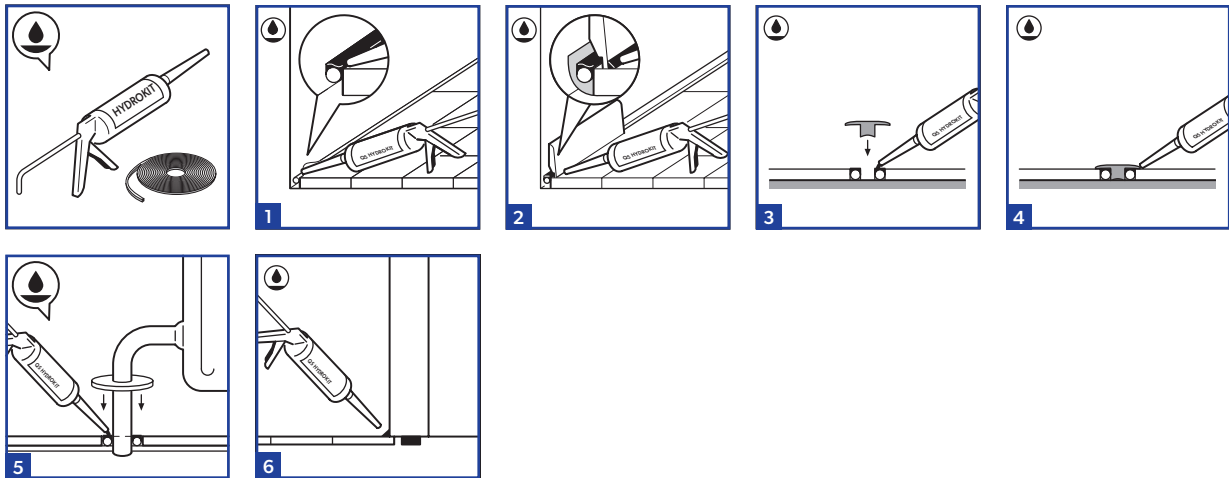
2

To install Quick-Step wood flooring around pipes, carefully measure and mark the planks with the exact center point for each pipe. Drill a hole at each of the marked points that is equivalent to the diameter of the pipe + 16 mm in dry climate and 24 mm in wet climate. If located on the long side of the plank make a 45 degree cut from each hole to the edge of the plank and then cut between the holes as shown. If located on the end of a plank make a straight cut across the plank. Install the plank. Then using some regular wood glue along the cut edges of the piece you've cut out and glue the piece in place where it belongs. Be sure no glue comes between the cut out piece and the subfloor. Use spacers to secure a tight glue point and remove any glue on the floor surface directly with a damp cloth. The gap you have created between the pipes are to ensure the floor can move as expected from season to season. In a floating installation these cannot be filled with any sealant, silicone or other adhesive. Use the Quick-Step radiator caps to conceal gaps around radiator pipes in this case.



3

Inspect the final surface of the installed floor, remove all spacers and install the Quick-Step wood wallbases according to the instructions.



3. FINISHING IN AREAS WITH LIQUID EXPOSURE

This installation instruction can prevent water infiltration around the perimeter and obstacles of your Wood flooring. Following these instructions carefully ensures the water-resistant floor will perform in most applications / room settings. These instructions will help to seal the perimeter of the floor preventing water infiltration into the wood flooring core in high-risk areas - i.e. areas with risk of liquid spillages on the surface, direct access to outside, etc. The floor is not suitable for use in *damp spaces* i.e. within shower enclosures, pool areas, saunas, and rooms with built-in drainage.

For a water resistant finishing, use the elastic waterproof transparant paste (QS Hydrokit) and the foamstrip (NEFOAMSTRIP).

1

Sealing the perimeter expansion gaps combines a compressible PE foamstrip with diameter 8 to 10 mm and the flexible and waterproof Quick-Step® HydroKit. Push the PE foam in the expansion gaps and apply the flexible Quick-Step® HydroKit under slight angle towards the Quick-Step® floor.

2

Install the skirting-board with Quick-Step One4all glue. In case you installed a skirting-board that is not water-resistant, apply the flexible HydroKit between skirtings and floor to avoid ingress of water. In places where profiles or skirting-boards cannot be placed, fill expansion joints with elastic paste (Quick-Step® Kit).

Tip: To make work more clean, it can be easy to put a tape on the floor before applying the flexible HydroKit. This tape can be removed immediatly after applying the HydroKit. Spilled HydroKit can be removed easily when it is dry.

3

Fix the Incizo base profile to the base floor with Quick-Step® One4all glue and/or screws. Apply the flexible HydroKit on the flexible PE foam that is in the expansion gap.

4

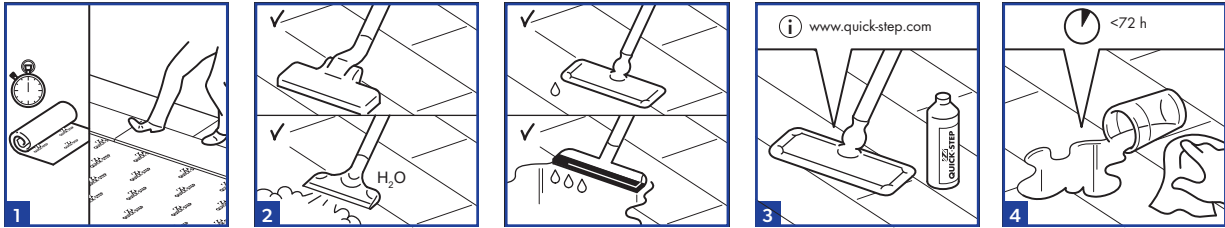
Push the Incizo profile in the base profile and the wet HydroKit.

5

For a perfect finish around pipes, use Quick-Step® pipe covers and the elastic waterproof transparant Quick-Step® HydroKit on top op the PE-foam. Then place the pipe cover and apply HydroKit around the pipe cover and around the tubes. This makes the ingress of water impossible.

6

To secure extra water protection around the perimeter of the floor and avoid water to enter underneath the panels, apply the flexible Quick-Step® Hydrokit up to the wall base, thresholds, door frames, pipe covers etc.



4. MAINTENANCE

1

When installing a floating floor you can walk on it during installation and immediately afterwards. After installation it is recommended to maintain a room temperature of 15-22°C and a relative humidity level between 30-85%. During winter time the air in the room is usually extremely dry, for this reason it is strongly recommended to use humidifiers in order to obtain a constant humidity level. In the summer and autumn, when there is a high relative humidity the room should be well ventilated. Too low RH may cause irreversible damage to the floor (ie. Cracks, Open Joints, Squeaking sound, ...)

2

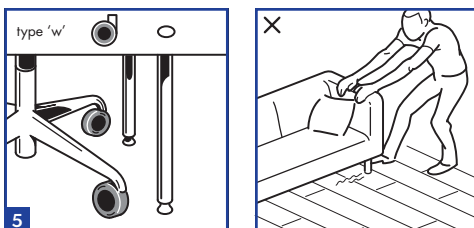
a. For dry maintenance, we advise a Quick-Step mop or vacuum cleaner. Make sure the vacuum cleaner is equipped with soft wheels and a special parquet brush to avoid scratches on your floor. b. You can use a steam cleaner on the Quick-Step water-resistant wood flooring range, if there's no steam directly coming on the wood floor. So it must be used with an appropriate cloth on the steam opening, which guarantees also an homogeneous heat and steam distribution. It is also important to take care to hold the apparatus not too long on the same place and clean the floor in the length direction of the planks.

3

For slightly damp and wet maintenance, we advise the Quick-Step maintenance set (see instructions). Be aware that the use of other cleaning products might damage your floor. For further information on how to clean and maintain your floor, please visit www.Quick-Step.com or contact your Quick-Step dealer. For specific cleaning instructions in commercial applications or projects, you can contact the Quick-Step technical department.

4

Remove any water within 72 hours.



5

Castor chairs must have castors of the so called type "soft wheels" and a plastic protector mat should be placed under the area where the chair is placed/used. All furniture legs should be protected by felt pads to avoid scratching the lacquered/oiled surface. Avoid sliding/dragging furniture over the wooden surface to avoid possible scratching. Lifting the furniture is recommended. Always place a quality door mat at any entrance door to avoid introduction of sand, dirt or water which might be harmful.

6

The manufacturer bears no responsibility for problems or damage which arises through inexpert preparation of the subfloor, the floor installation itself or the exposition of the floor to unsuitable climatic conditions/maintenance. The right for compensation for damaged or differently coloured planks does not extend to wood floors which already have been installed. In non-standard cases we recommend you to inform yourself sufficiently with regards to the specific requirements of our construction project. In the event of further questions please contact your retailer.